



Chinese Weekly Influenza Surveillance Report

May 11 to 17, 2026 (Week 20)

(All data are preliminary and may change as more reports are received)

Summary

- The positive rate of influenza virus testing increased in southern provinces, while decreased in northern provinces. Influenza B predominated. There were 18 ILI outbreaks reported in this week.
- Among influenza viruses antigenically characterized by CNIC since October 1, 2025, 101(94.4%) influenza A(H1N1)pdm09 viruses were characterized as A/Victoria/4897/2022-like; 558(21.6%) influenza A(H3N2) viruses were characterized as A/Croatia/10136RV/2023(egg)-like, 1030(39.9%) influenza A(H3N2)viruses were characterized as A/District of Columbia/27/2023(cell)-like; 594(98.2%) influenza B/Victoria viruses were characterized as B/Austria/1359417/2021-like.
- Among the influenza viruses tested by CNIC for antiviral resistance analysis since October 1, 2025, all but 2 influenza A(H1N1)pdm09 and 2 influenza A(H3N2) were sensitive to neuraminidase inhibitors, all B viruses were sensitive to neuraminidase inhibitors; all A(H1N1)pdm09, A(H3N2) and B viruses were sensitive to influenza polymerase inhibitors.

Surveillance of outpatient or emergency visits for Influenza-like Illness (ILI)

During week 20, the percentage of outpatient or emergency visits for ILI (ILI%) at national sentinel hospitals in southern provinces was 4.2%, higher than the last week (4.1%), lower than the same week of 2023, 2024 and 2025(7.5% , 5.6% and 4.3%). (Figure 1)

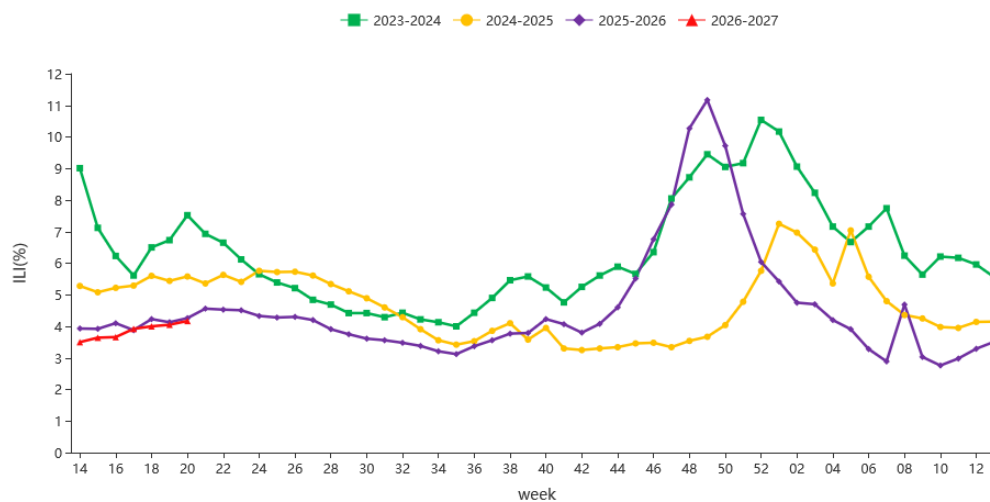


Figure 1. Percentage of Visits for ILI at Sentinel Hospitals in Southern Provinces

Note: Analysis in this part was based on data from sentinel hospitals belong to national influenza surveillance network.

During week 20, ILI% at national sentinel hospitals in northern provinces was 3.4%, lower than the last week (3.6%), lower than the same week of 2023 and 2024(4.1% and 3.9%), higher than the same week of 2025(3.1%) . (Figure 2)

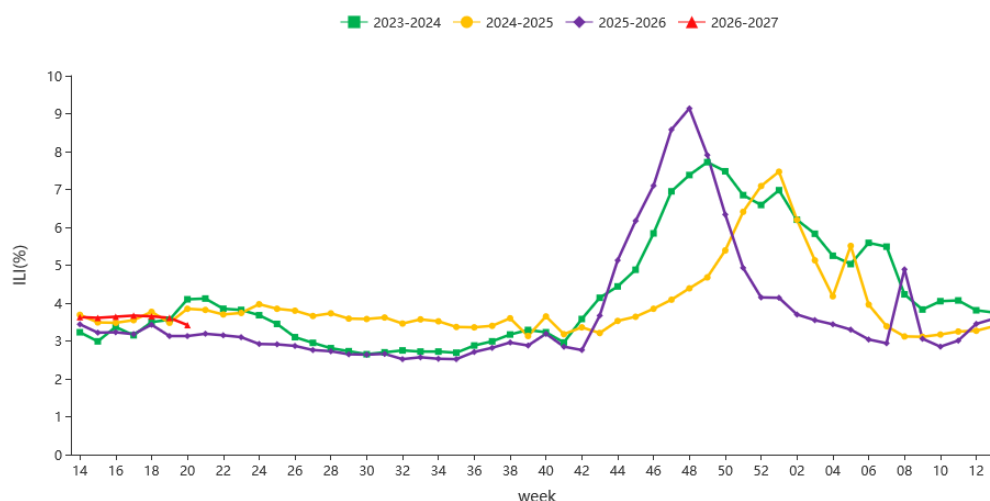


Figure 2. Percentage of Visits for ILI at Sentinel Hospitals in Northern Provinces

Note: Analysis in this part was based on data from sentinel hospitals belong to national influenza surveillance network.



Virologic Surveillance

During week 20 of 2026, influenza network laboratories tested 14046 specimens, there were 1526 positive detections for influenza. The number and proportion of influenza types and subtypes detected in southern and northern provinces were shown in Table 1.

Table 1. Laboratory Detections of ILI Specimens (Week 20, 2026)

	Week 20		
	Southern provinces	Northern provinces	Total
No. of specimens tested	10699	3347	14046
No. of positive specimens (%)	1146(10.7%)	380(11.4%)	1526(10.9%)
Influenza A	70(6.1%)	14(3.7%)	84(5.5%)
A(H1N1)pdm09	6(8.6%)	6(42.9%)	12(14.3%)
A(H3N2)	64(91.4%)	8(57.1%)	72(85.7%)
A (subtype not determined)	0	0	0
Influenza B	1076(93.9%)	366(96.3%)	1442(94.5%)
B (lineage not determined)	0	0	0
Victoria	1076(100.0%)	366(100.0%)	1442(100.0%)
Yamagata	0	0	0

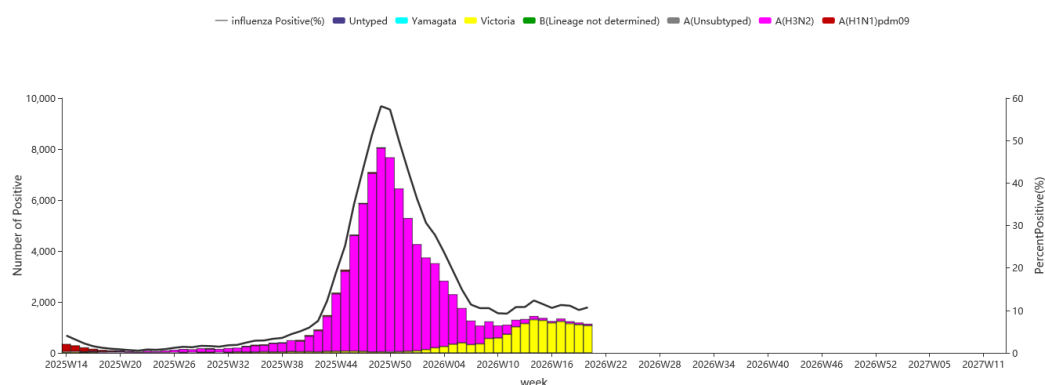


Figure 3. Influenza Positive Tests Reported by Southern Network Laboratories

Note: Analysis in this part was based on the test results of network laboratories. If it were not consistent with the results of CNIC confirmation, the results of CNIC confirmation were used.

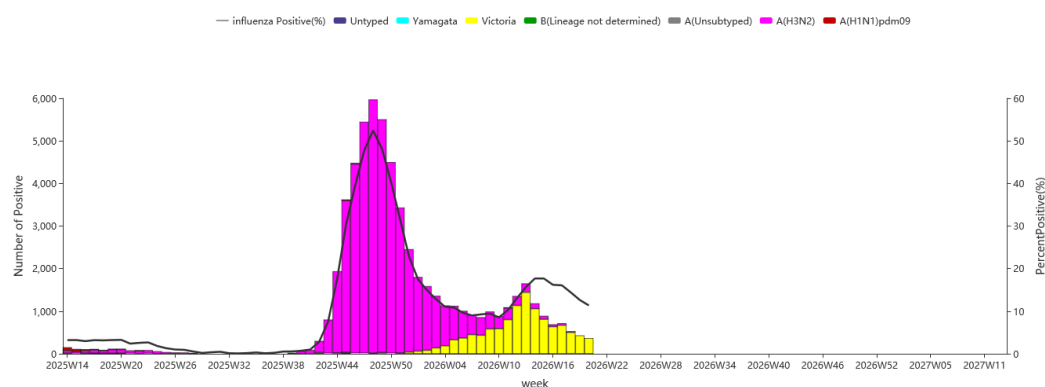


Figure 4. Influenza Positive Tests Reported by Northern Network Laboratories

Note: Analysis in this part was based on the result of network laboratories. If it were not consistent with the results of CNIC confirmation, the results of CNIC confirmation were used.

Antigenic Characterization

Since October 1, 2025, 101(94.4%) influenza A(H1N1)pdm09 viruses were characterized as A/Victoria/4897/2022-like; 558(21.6%) influenza A(H3N2) viruses were characterized as A/Croatia/10136RV/2023(egg)-like, 1030(39.9%) influenza A(H3N2)viruses were characterized as A/District of Columbia/27/2023(cell)-like; 594(98.2%) influenza B/Victoria viruses were characterized as B/Austria/1359417/2021-like.



Antiviral Resistance

Since October 1, 2025, among the influenza viruses tested by CNIC for antiviral resistance, all but 2 influenza A(H1N1)pdm09 and 2 influenza A(H3N2) were sensitive to neuraminidase inhibitors, all B viruses were sensitive to neuraminidase inhibitors; all A(H1N1)pdm09, A(H3N2) and B viruses were sensitive to influenza polymerase inhibitors.

Outbreak Surveillance

During week 20, there were 18 ILI outbreaks reported nationwide. Among them, 12 were B/Victoria, 2 were B(lineage not determined), 4 had not obtained the testing results.