

Chinese Influenza Weekly Report

(All data are preliminary and may change as more reports are received)

Summary

- During week 42, influenza detections showed an upward trend in southern provinces since September with detections of B/Victoria. The number of influenza viruses detected in northern provinces has increased in comparison with last week. There were thirty-eight outbreaks reported in week 42.
- Among influenza viruses antigenically characterized by CNIC since April 5th, 2021, 465 (32.1%) influenza B/Victoria viruses were characterized as B/Washington/02/2019-like.
- Among the influenza viruses tested by CNIC for antiviral resistance analysis since April 5th, 2021, all influenza B viruses were sensitive to neuraminidase inhibitors.

Surveillance of outpatient or emergency visits for Influenza-like Illness (ILI)

During week 42(Otc18th–24th 2021), the percentage of outpatient or emergency visits for ILI (ILI%) at national sentinel hospitals in southern provinces was 3.0%, higher than the last week (2.8%), higher than the same week of 2018-2019(2.6% and 2.9%), lower than the same week of 2020(3.1%). (Figure 1)

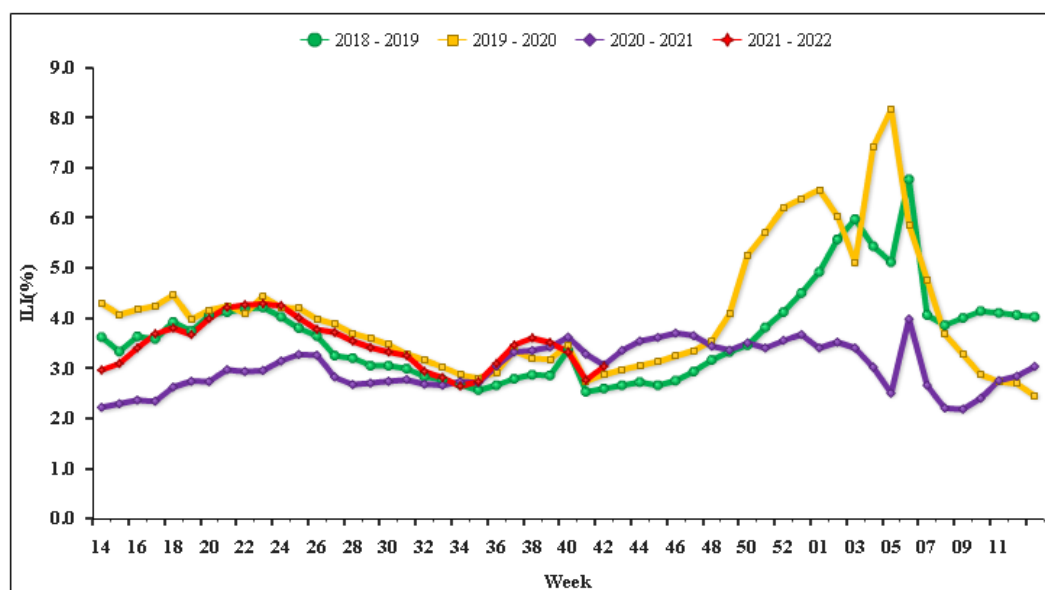


Figure 1. Percentage of Visits for ILI at Sentinel Hospitals in Southern Provinces (2018-2022)

During week 42, ILI% at national sentinel hospitals in northern provinces was 2.3%, higher than the last week (2.0%), the same as the same week of 2018 (2.3%), lower than the same week of 2019 (2.4%), higher than the same week of 2020 (2.2%). (Figure 2)

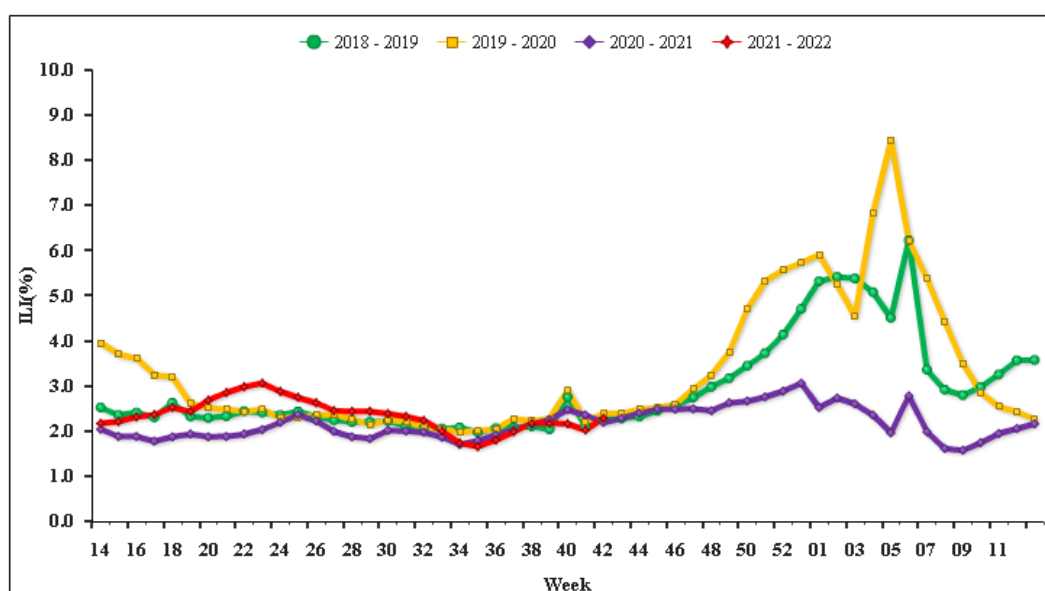


Figure 2. Percentage of Visits for ILI at Sentinel Hospitals in Northern Provinces (2018-2022)

Virologic Surveillance

During week 42, influenza network laboratories tested 8715 specimens, there were 463 positive detections for influenza. The number and proportion of influenza types and subtypes detected in southern and northern provinces were shown in Table1.

Table 1 Laboratory Detections of ILI Specimens (Week 42, 2021)

	Week 42		
	Southern provinces	Northern provinces	Total
No. of specimens tested	4485	4230	8715
No. of positive specimens (%)	395(8.8%)	68(1.6%)	463(5.3%)
Influenza A	0	0	0
A(H3N2)	0	0	0
A(H1N1)pdm09	0	0	0
A (subtype not determined)	0	0	0
Influenza B	395(100%)	68(100%)	463(100%)
B (lineage not determined)	1(0.3%)	1(1.5%)	2(0.4%)
Victoria	394(99.7%)	67(98.5%)	461(99.6%)
Yamagata	0	0	0

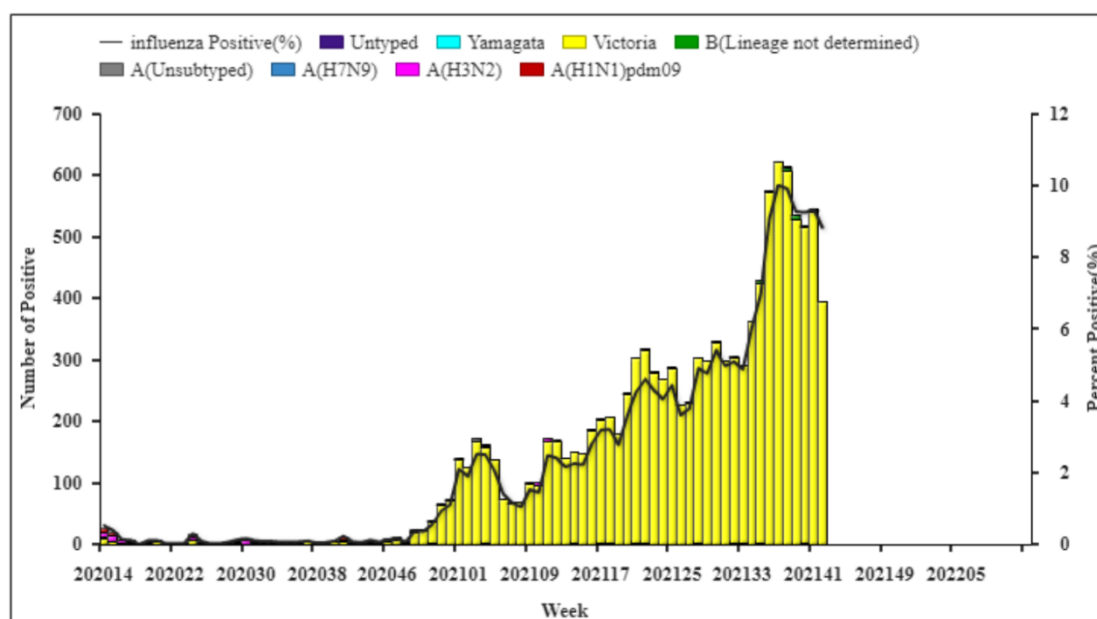


Figure 3. Influenza Positive Tests Reported by Southern Network Laboratories (Week 14, 2020–Week 13, 2022)

Note: Analysis in this part was based on the test results of network laboratories. If it were not consistent with the results of CNIC confirmation, the results of CNIC confirmation were used.

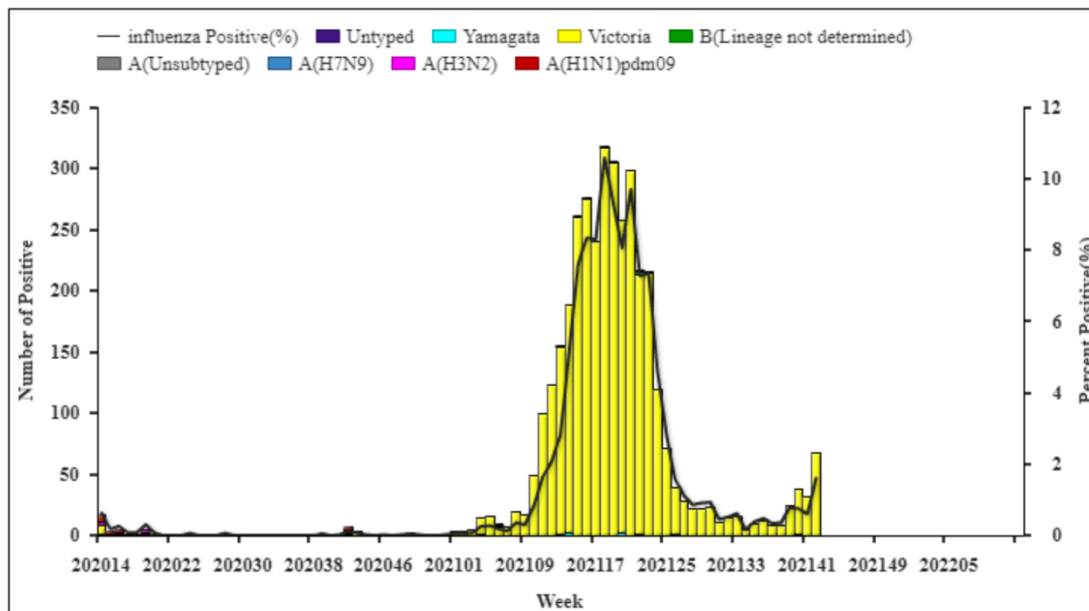


Figure 4. Influenza Positive Tests Reported by Northern Network Laboratories (Week 14, 2020–Week 13, 2022)

Note: Analysis in this part was based on the result of network laboratories. If it were not consistent with the results of CNIC confirmation, the results of CNIC confirmation were used.

Antigenic Characterization

Since April 5th, 2021, 465 (32.1%) influenza B/Victoria viruses were characterized as B/Washington/02/2019-like.

Antiviral Resistance

Since April 5th, 2021, among the influenza viruses tested by CNIC for antiviral resistance, all influenza B viruses were sensitive to neuraminidase inhibitors.

Outbreak Surveillance

During week 42(Oct 18th-Oct 24th 2021), there were thirty-eight ILI outbreaks reported nationwide. Eighteen of them were B(Victoria), eleven of them were B (lineage not determined), four of them were negative for flu, one of them was other pathogen, four of them had not obtained the testing results.