

Chinese Influenza Weekly Report

(All data are preliminary and may change as more reports are received)

Summary

- During week 41, influenza detections showed an upward trend in southern provinces since September with detections of B/Victoria and only a small number of influenza viruses were detected in northern provinces.
- Among influenza viruses antigenically characterized by CNIC since April 5th, 2021, 465 (32.1%) influenza B/Victoria viruses were characterized as B/Washington/02/2019-like.
- Among the influenza viruses tested by CNIC for antiviral resistance analysis since April 5th, 2021, all influenza B viruses were sensitive to neuraminidase inhibitors.

Surveillance of outpatient or emergency visits for Influenza-like Illness (ILI)

During week 41 (Oct11th–17th 2021), the percentage of outpatient or emergency visits for ILI (ILI%) at national sentinel hospitals in southern provinces was 2.7%, lower than the last week (3.3%), higher than the same week of 2018(2.5%), the same as the same week of 2019(2.7%), lower than the same week of 2020(3.3%). (Figure 1)

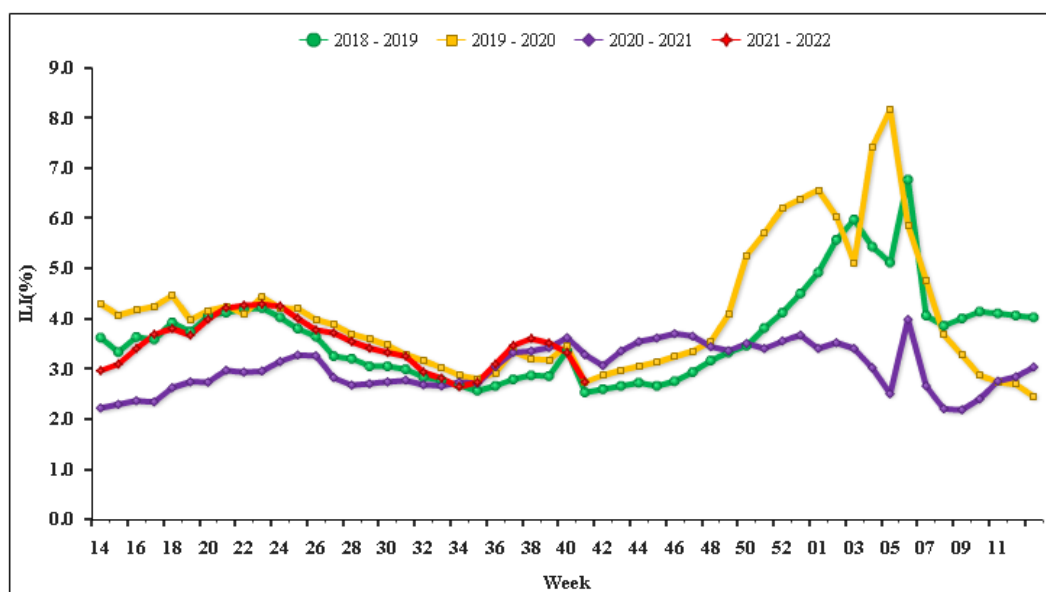


Figure 1. Percentage of Visits for ILI at Sentinel Hospitals in South China (2018-2022)

During week 41, ILI% at national sentinel hospitals in northern provinces was 2.0%, lower than the last week (2.2%), lower than the same week of 2018-2020 (2.1%, 2.2% and 2.4%). (Figure 2)

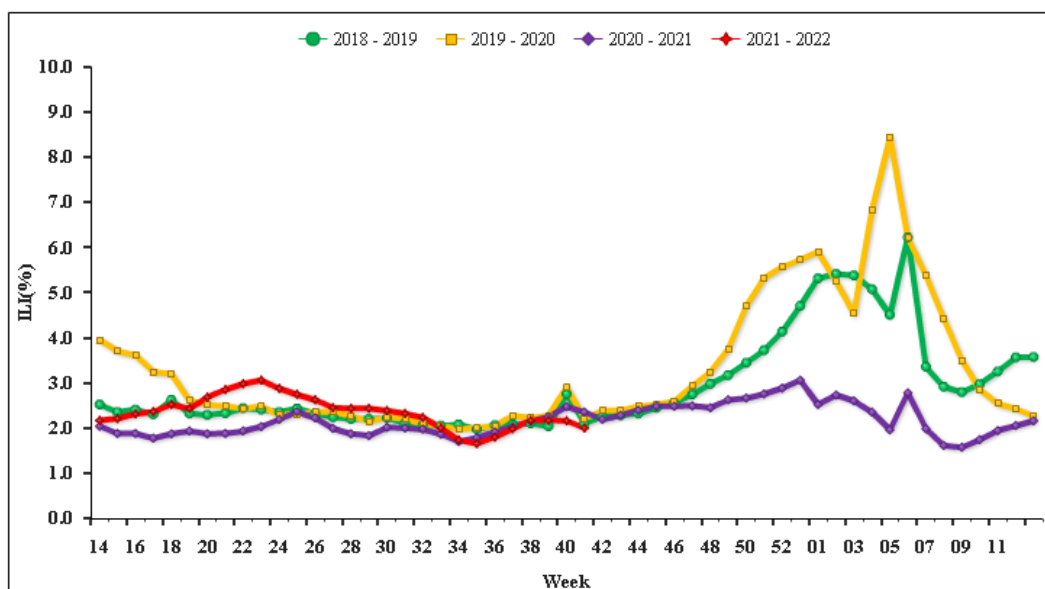


Figure 2. Percentage of Visits for ILI at Sentinel Hospitals in North China (2018-2022).

Virologic Surveillance

During week 41, influenza network laboratories tested 8919 specimens; there were 403 positive detections for influenza. The number and proportion of influenza types and subtypes detected in southern and northern provinces were shown in Table 1.

Table 1 Laboratory Detections of ILI Specimens (Week 41, 2021)

	Week 41		
	Southern provinces	Northern provinces	Total
No. of specimens tested	4436	4483	8919
No. of positive specimens (%)	376(8.5%)	27(0.6%)	403(4.5%)
Influenza A	2(0.5%)	0	2(0.5%)
A(H3N2)	2(100%)	0	2(100%)
A(H1N1)pdm09	0	0	0
A (subtype not determined)	0	0	0
Influenza B	374(99.5%)	27(100%)	401(99.5%)
B (lineage not determined)	5(1.3%)	0	5(1.2%)
Victoria	369(98.7%)	27(100%)	396(98.8%)
Yamagata	0	0	0

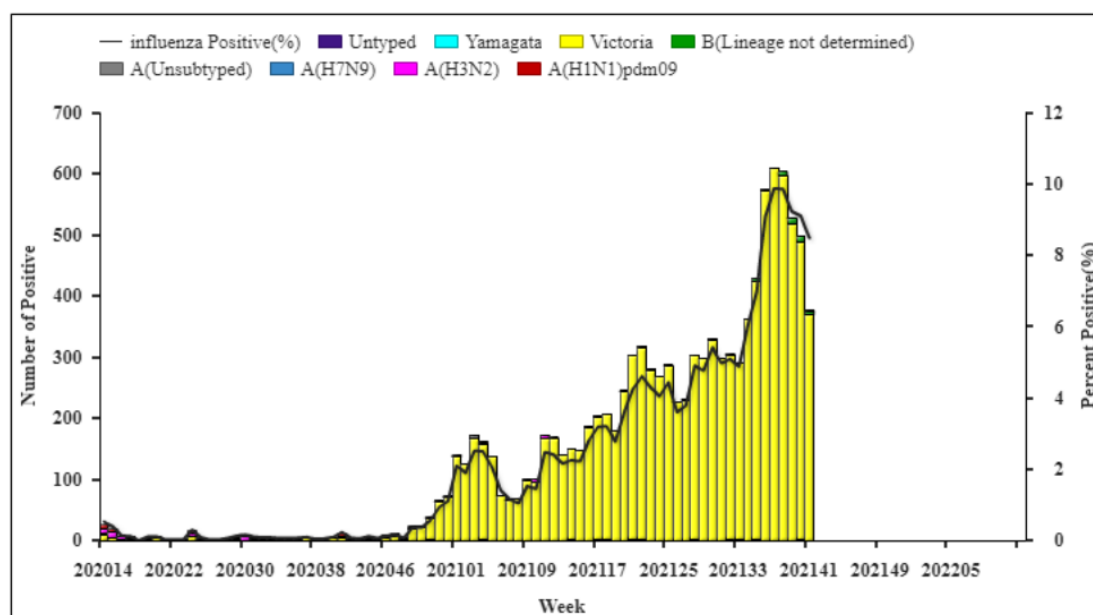


Figure 3. Influenza Positive Tests Reported by Southern Network Laboratories

(Week 14, 2020–Week 13, 2022)

Note: Analysis in this part was based on the test results of network laboratories. If it were not consistent with the results of CNIC confirmation, the results of CNIC confirmation were used.

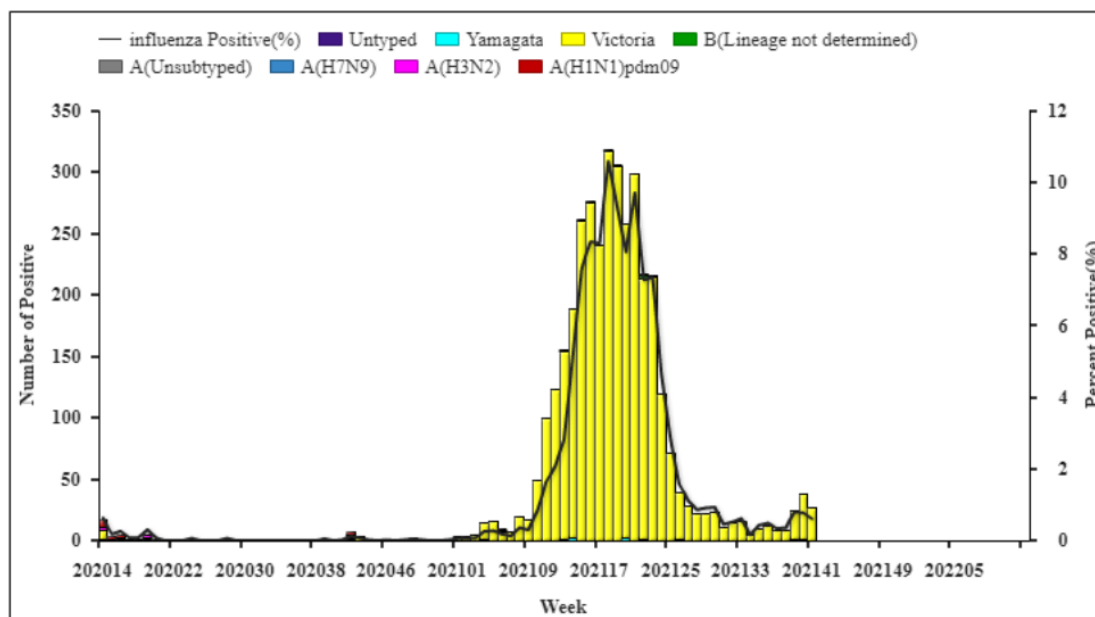


Figure 4. Influenza Positive Tests Reported by Northern Network Laboratories (Week 14, 2020–Week 13, 2022)

Note: Analysis in this part was based on the result of network laboratories. If it were not consistent with the results of CNIC confirmation, the results of CNIC confirmation were used.

Antigenic Characterization

Since April 5th, 2021, 465 (32.1%) influenza B/Victoria viruses were characterized as B/Washington/02/2019-like.

Antiviral Resistance

Since April 5th, 2021, among the influenza viruses tested by CNIC for antiviral resistance, all influenza B viruses were sensitive to neuraminidase inhibitors.

Outbreak Surveillance

During week 41, there were six ILI outbreak events reported nationwide. Four of them were B (lineage not determined), one of them was B(Victoria), one of them had not obtained the testing results.

H7N9 Case Report

During week 41, no new human infection with novel reassortant influenza A(H7N9) virus was reported.